

Tables And Figures To Accompany Prepared Testimony

Nicholas Eberstadt, Ph.D.

Henry Wendt Chair in Political Economy

American Enterprise Institute

<eberstadt@aei.org>

Committee on Health, Education, Labor and Pensions

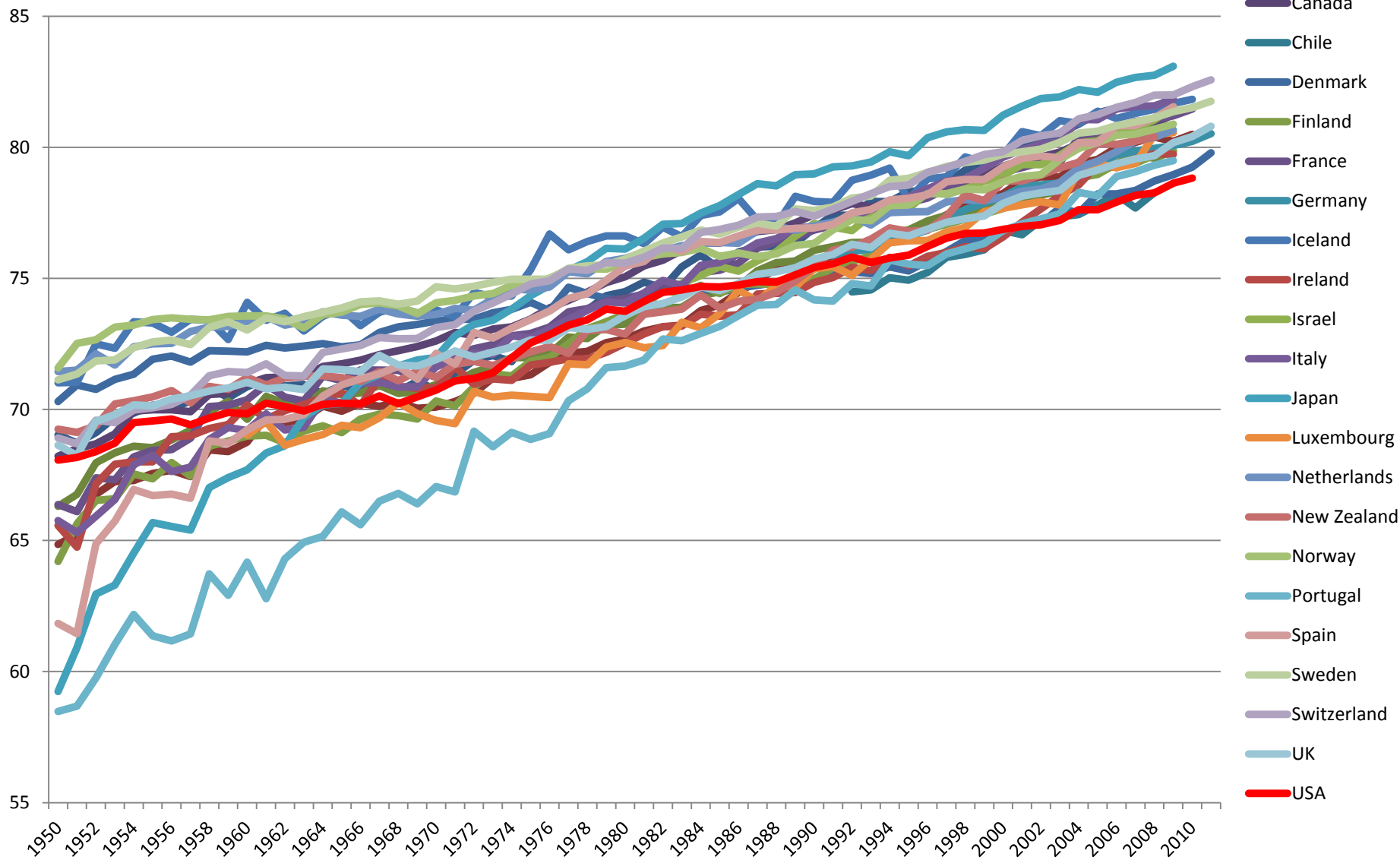
Subcommittee on Primary Health and Aging

U.S. Senate

Washington, D.C.

November 20, 2013

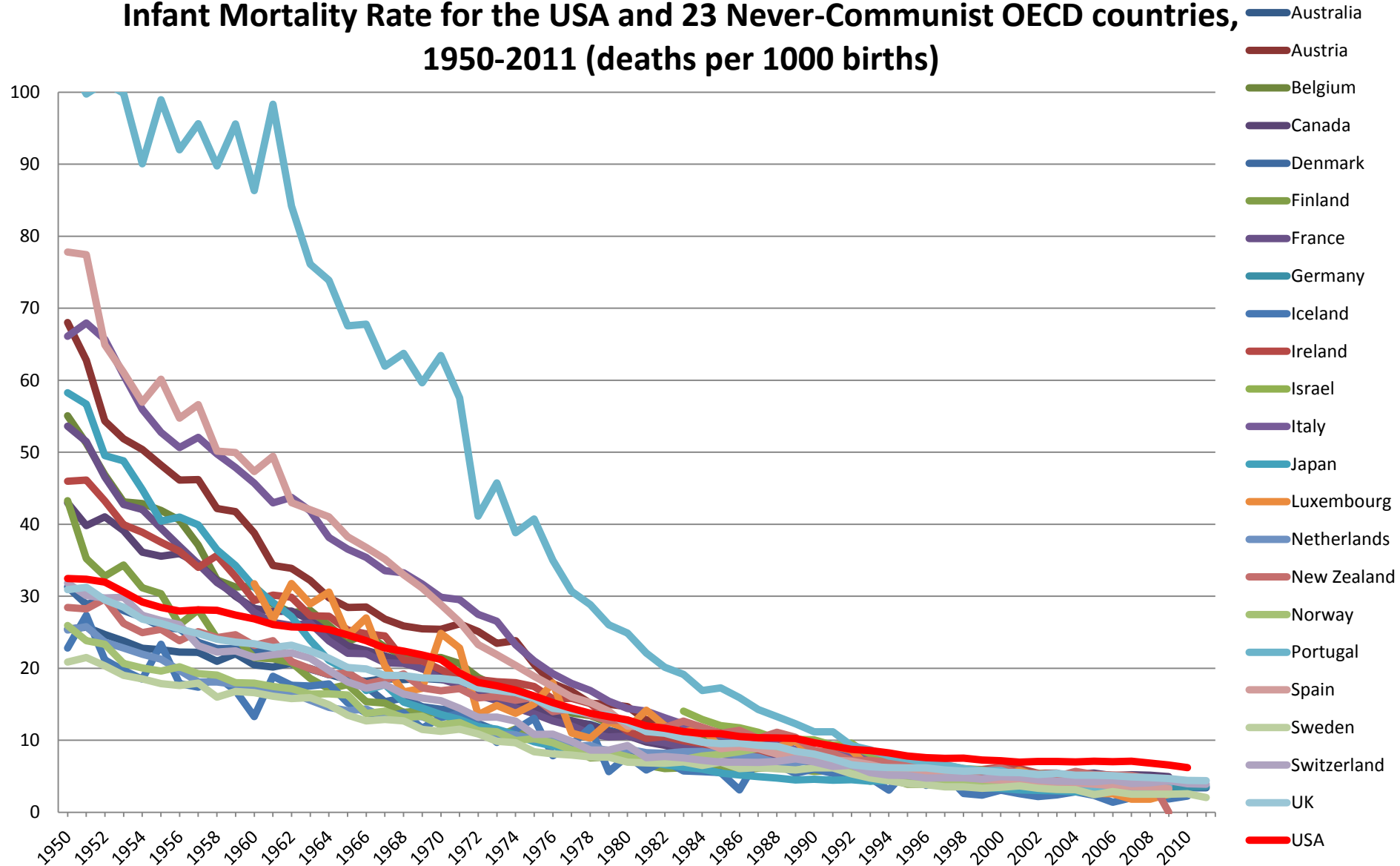
Figure 1
Life Expectancy at Birth, USA vs. 23 Never-Communist
OECD countries, 1950-2011 (years)



Source: *Human Mortality Database*. University of California, Berkeley (USA), and Max Planck Institute for Demographic Research (Germany). Available at www.mortality.org, Accessed November 15, 2013.

Figure 2

Infant Mortality Rate for the USA and 23 Never-Communist OECD countries, 1950-2011 (deaths per 1000 births)



Source: *Human Mortality Database*. University of California, Berkeley (USA), and Max Planck Institute for Demographic Research (Germany). Available at www.mortality.org, Accessed November 15, 2013.

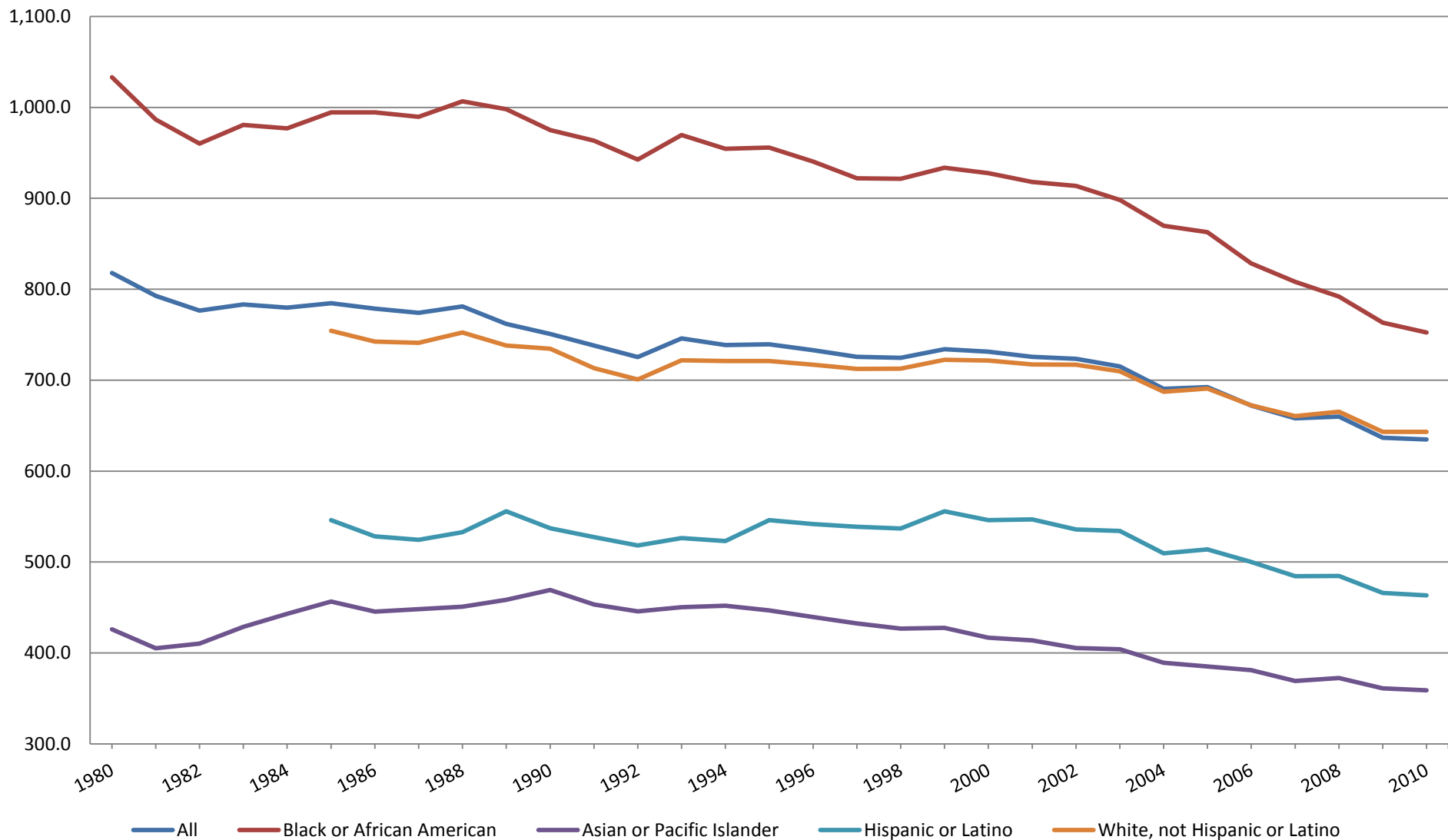
Table 1

Socioeconomic Disparities and Mortality in the United States, by Ethnicity, c. 2010

	Poverty Rate (2010)	Percent Adults Age 25+ without High school Degree (2009)	Gini Coefficient for Family Income (2010)	Percent with no health insurance (2010)	Age-Adjusted Percentage of Adults Age 18+ With no Health Care Visits over Previous 12 Months (2009)	Age standardized mortality rate (2008-2010)	Index of Age Standardized Mortality 2008-2010 (All = 100)
White, not Hispanic	9.9	9.6	0.418	11.7	16.5	755.0	101
Asian Pacific	12.2	14.7	0.427	18.4	24.2	424.3	57
Black, not Hispanic	27.4 (classified as Black alone)	18.6	0.463	20.8	19.7	898.2 (classified as Black or African American)	120
Hispanic (any race)	26.5	39.1	0.456	30.7	29.8	558.6	75
All	15.1	14.7	0.440	16.3	19.5	747.0	100

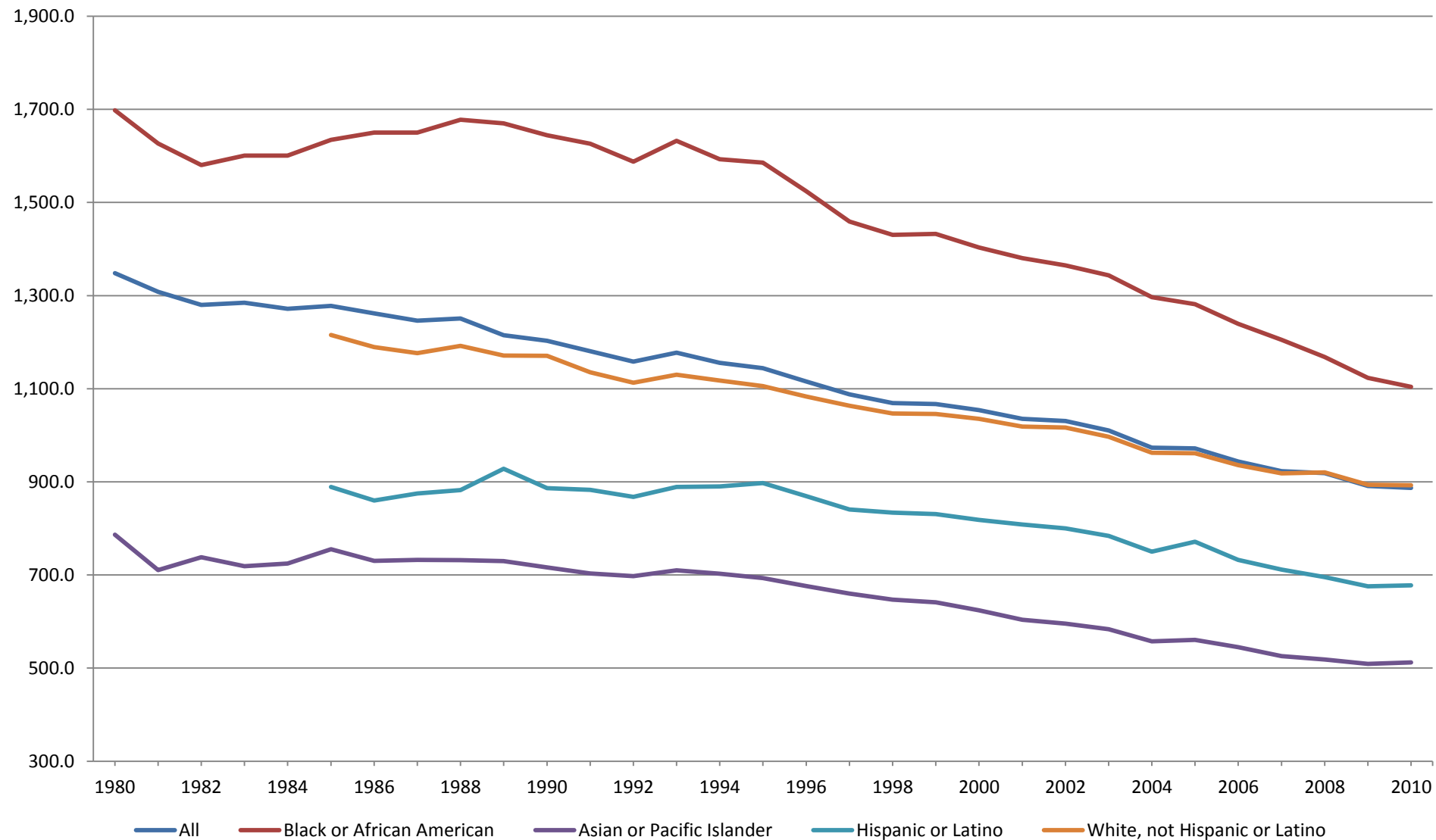
Sources: Poverty Rate: U.S. Census Bureau, Current Population Survey, 2011 Annual Social and Economic Supplements, http://www.census.gov/hhes/www/cpstables/032011/pov/POV01_100.htm; Education: Camille L. Ryan and Julie Siebens, *Educational attainment in the United States: 2009*, U.S. Census Bureau, Current Population Reports, P20-556 (February 2012), Table 1, <http://www.census.gov/prod/2012pubs/p20-566.pdf>; Gini coefficient for family income: U.S. Census Bureau, "Historical Income Tables: Income Inequality", Table F-4, <http://www.census.gov/hhes/www/income/data/historical/inequality/>; Health Insurance: Carmen DeNavas-Walt, Bernadette D. Proctor, Jessica C. Smith, U.S. Census Bureau, Current Population Reports, P60-239, *Income, Poverty, and Health Insurance Coverage in the United States: 2010*, Figure 7 and Table 8, <http://www.census.gov/prod/2011pubs/p60-239.pdf>; Health Care Use: Schiller JS, Lucas JW, Peregoy JA. Summary health statistics for U.S. adults: National Health Interview Survey, 2011. National Center for Health Statistics. Vital Health Stat 10(256). 2012., Table 35, http://www.cdc.gov/nchs/data/series/sr_10/sr10_256.pdf; Mortality: Centers for Disease Control/National Center for Health Statistics, *Health, United States, 2012*, Table 20, <http://www.cdc.gov/nchs/hus/contents2012.htm#fig01>. All Data Accessed November 15, 2013.

Figure 3
Age Standardized Mortality for Females by Ethnicity:
USA, 1980-2010



Source: CDC/NCHS, National Vital Statistics System, Compressed Mortality File, See Appendix I, National Vital Statistics System (NVSS), Health, United States, 2012, Table 25, <http://www.cdc.gov/nchs/hus/contents2012.htm#fig01>, Accessed November 15, 2013

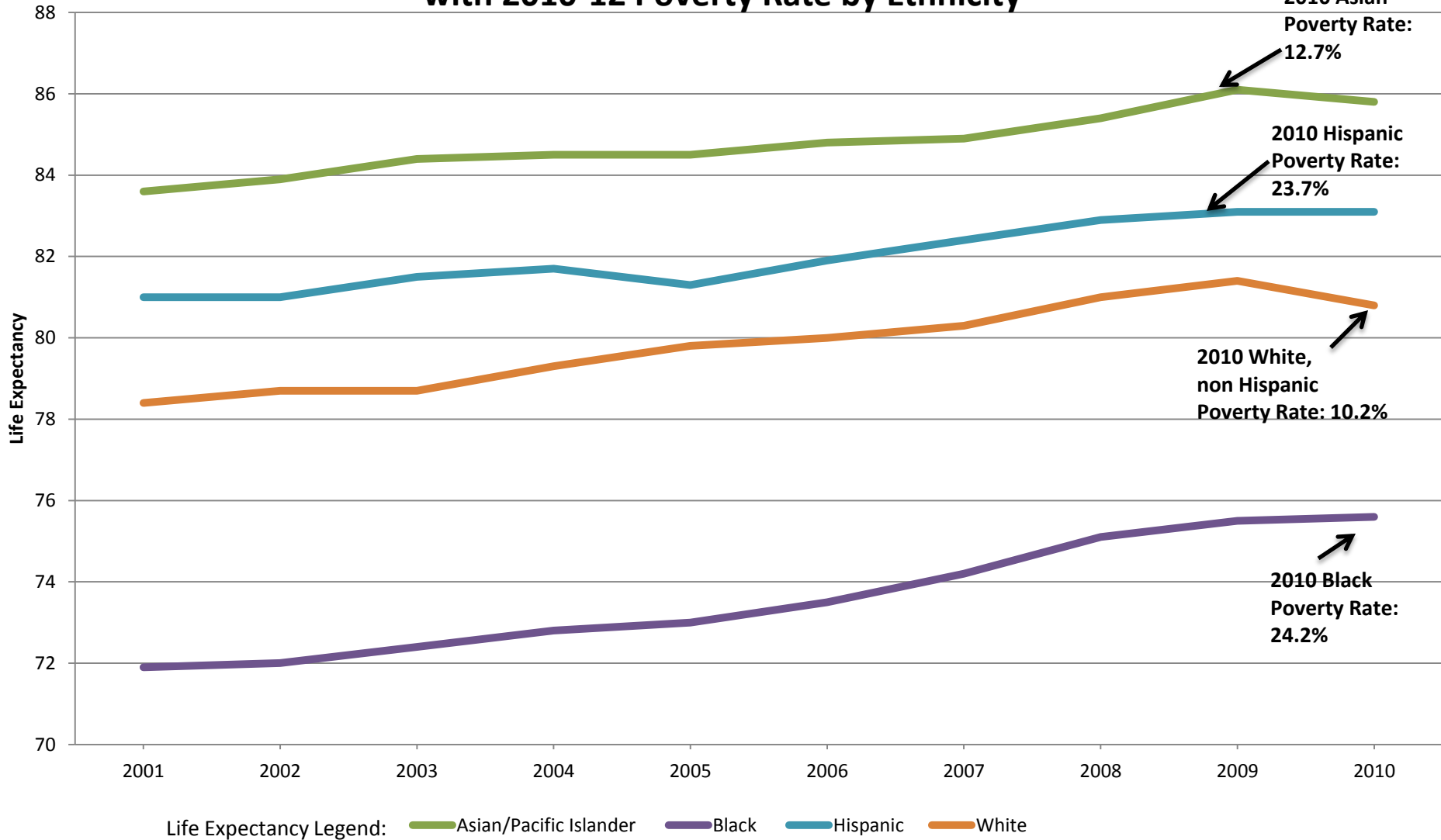
Figure 4
Age Standardized Mortality for Males by Ethnicity:
USA, 1980-2010



Source: CDC/NCHS, National Vital Statistics System, Compressed Mortality File, See Appendix I, National Vital Statistics System (NVSS), Health, United States, 2012, Table 25, <http://www.cdc.gov/nchs/hus/contents2012.htm#fig01>, Accessed November 15, 2013

Figure 5

**Life Expectancy at Birth in Los Angeles County by Ethnicity, 2001-2010
with 2010-12 Poverty Rate by Ethnicity**



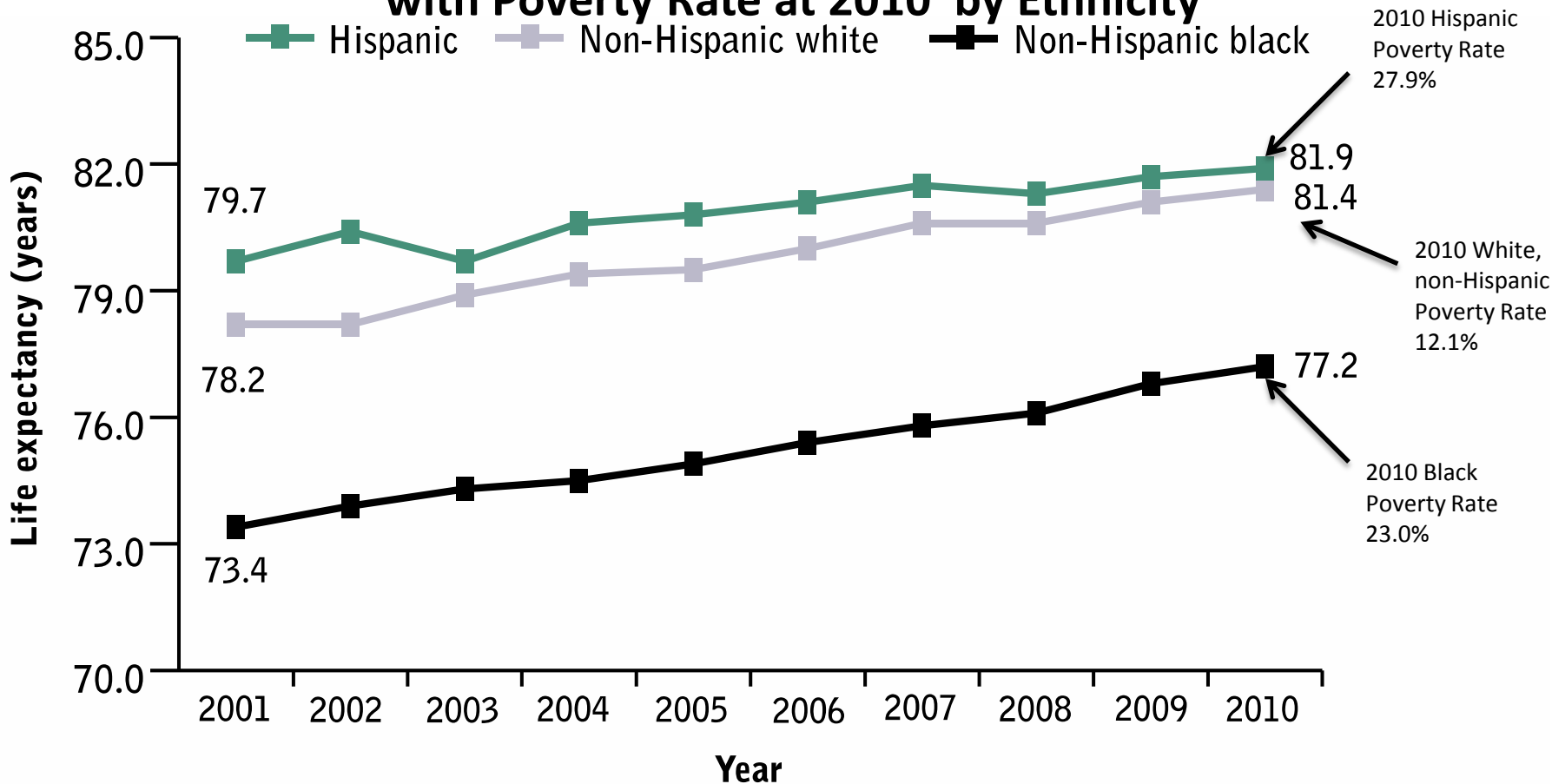
Sources: Life expectancy dataset, County of Los Angeles, Department of Public Health, <https://dqs.publichealth.lacounty.gov/query.aspx?d=3>, Accessed November 15, 2013;

Poverty Rate Statistics: Poverty Status in the Past (S1701): Los Angeles County, U.S. Census Bureau, American Community Survey, 2010-2012

Figure 6

Life Expectancy at Birth by Race/Ethnicity in New York City, 2001-2010;

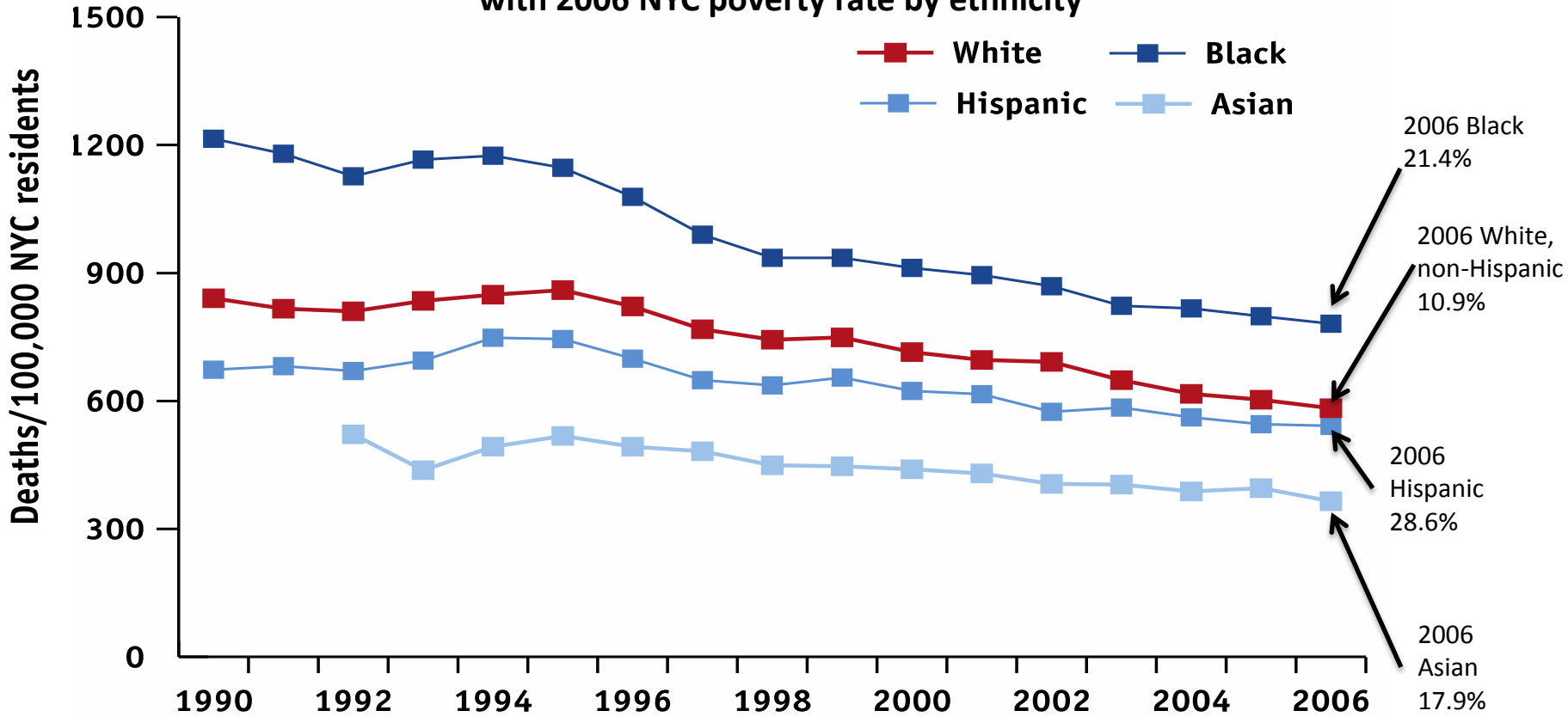
with Poverty Rate at 2010 by Ethnicity



Sources: NYC DOHMH Bureau of Vital statistics from Li W, Maduro G, Begier EM. Life Expectancy in New York City: What Accounts for the Gains? New York City Department of Health and Mental Hygiene: Epi Research Report, March 2013; 1-12. Poverty Rate Statistics: Poverty Status in the Past 12 months(S1701): New York City, New York, U.S. Census Bureau, American Community Survey, 2010.

Figure 7

Age Standardized Mortality by Race/Ethnicity in New York City, 1990-2006;
with 2006 NYC poverty rate by ethnicity

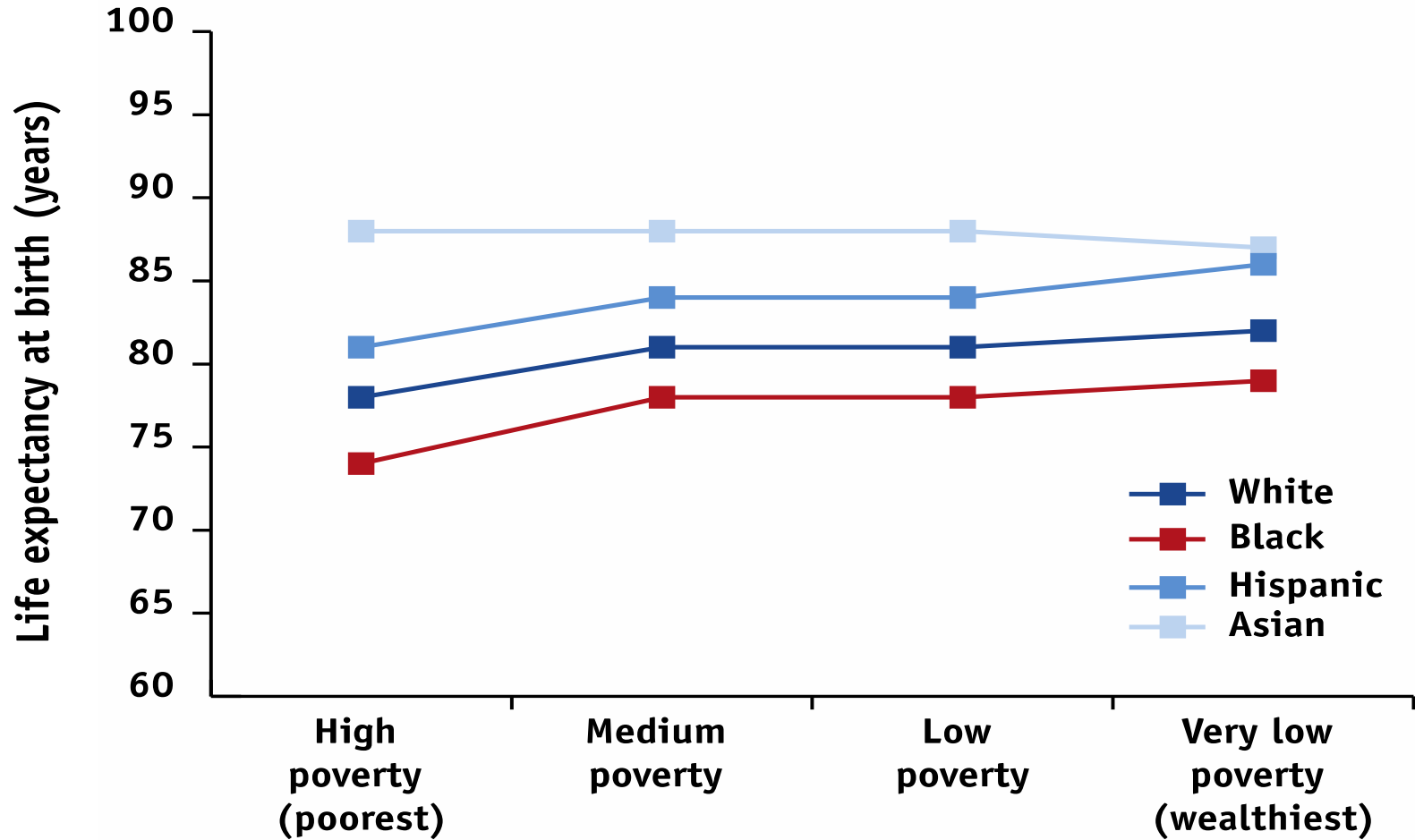


Notes: Rates are age adjusted. Asian data prior to 1993 excluded due to changes in category definition.

Sources: US Census 1990 and 2006; NYC DOHMH neighborhood population estimates, 2000-2006; Bureau of Vital Statistics, NYC DOHMH, 1990-2006 from Myers C, Olson C, Kerker B, Thorpe L., Greene C., Farley T. Reducing Health Disparities in New York City: Health Disparities in Life Expectancy and Death. New York: New York City Department of Health and Mental Hygiene, 2010. Poverty Rate Statistics: Poverty Status in the Past (S1701): New York City, New York, U.S. Census Bureau, American Community Survey, 2005.

Figure 8

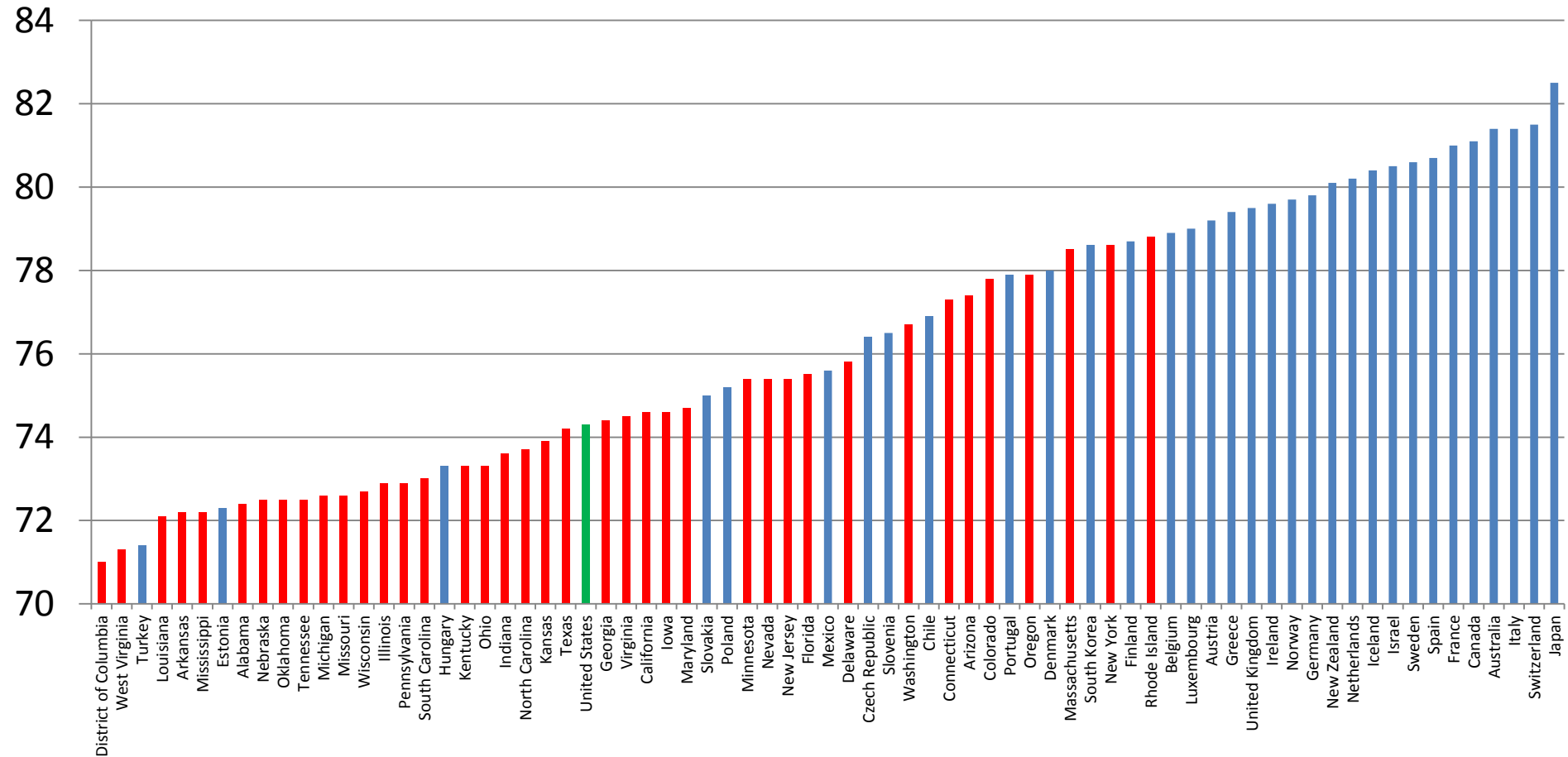
Life expectancy varies by neighborhood poverty and race in NYC (2004-2006 annual average)



Source: Bureau of Vital Statistics, NYC DOHMH, and New York State Dept. Health Bureau of Biometrics, 2004-2006 combined; NYC neighborhood population estimates, 2004-2006 combined from Myers C, Olson C, Kerker B, Thorpe L., Greene C., Farley T. Reducing Health Disparities in New York City: Health Disparities in Life Expectancy and Death. New York: New York City Department of Health and Mental Hygiene, 2010.

Figure 9

Life Expectancy at Birth, 2007 in Years: OECD Nations vs. African Americans by State



Source: OECD Data: United States Census Bureau. International Programs. International Data Base. Mortality Indicators by Sex.

<http://www.census.gov/population/international/data/idb/informationGateway.php> (Accessed: November 17, 2013)

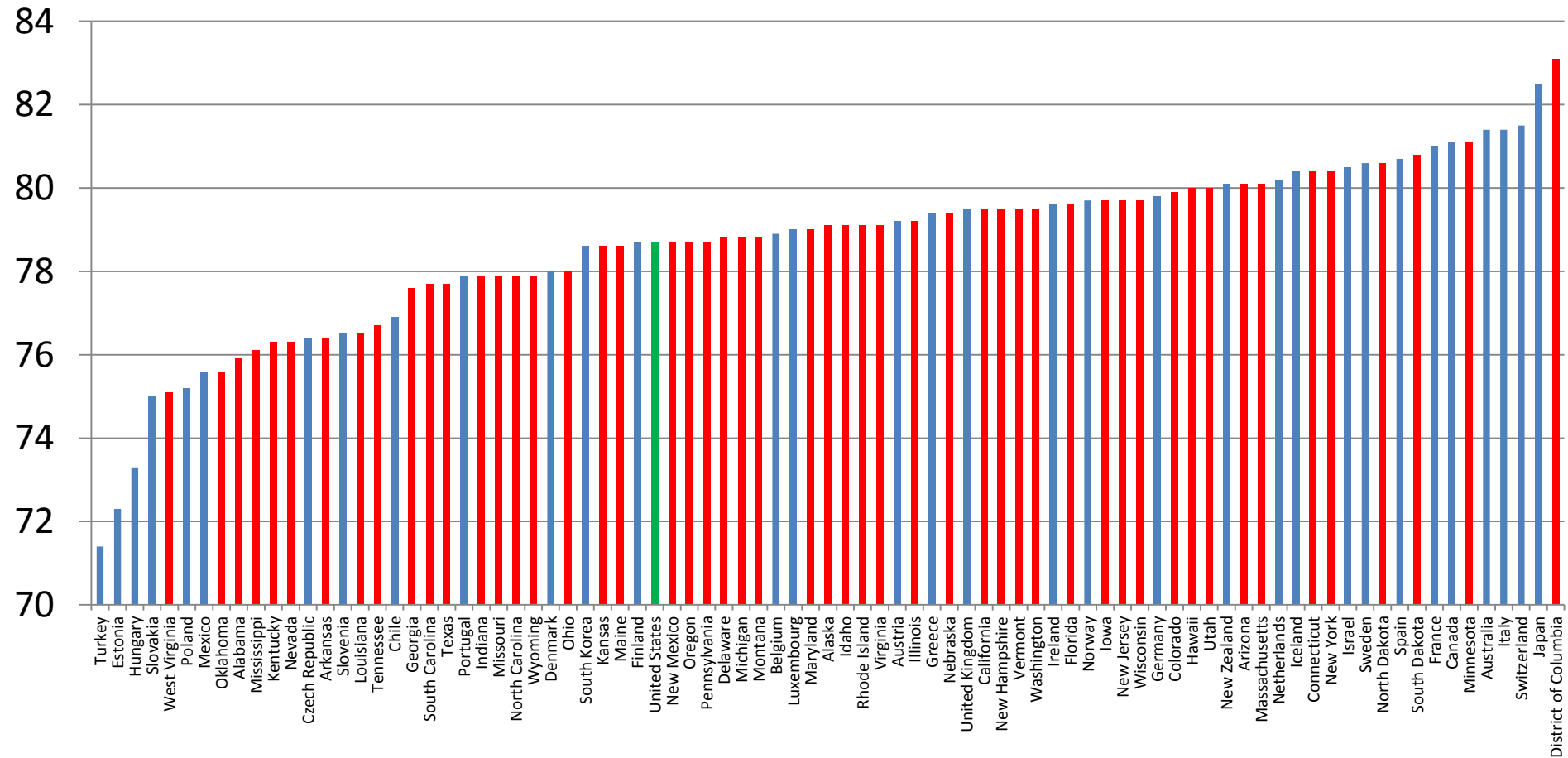
US Data: HD Index and Supplemental Indicators By State, 2010-11 Dataset, Measure of America, Social Science Research Council,

<http://measureofamerica.org/maps/?area=States&race=All&sex=All&year=Year2010&index=Life%20Expectancy%20at%20Birth%20%28years%29>

(Accessed: Jan. 9, 2013)

Figure 10

Life Expectancy at Birth, 2007 in Years: OECD Nations vs. White Americans by State



Source: OECD Data: United States Census Bureau. International Programs. International Data Base. Mortality Indicators by Sex.

<http://www.census.gov/population/international/data/idb/informationGateway.php> (Accessed: November 17, 2013)

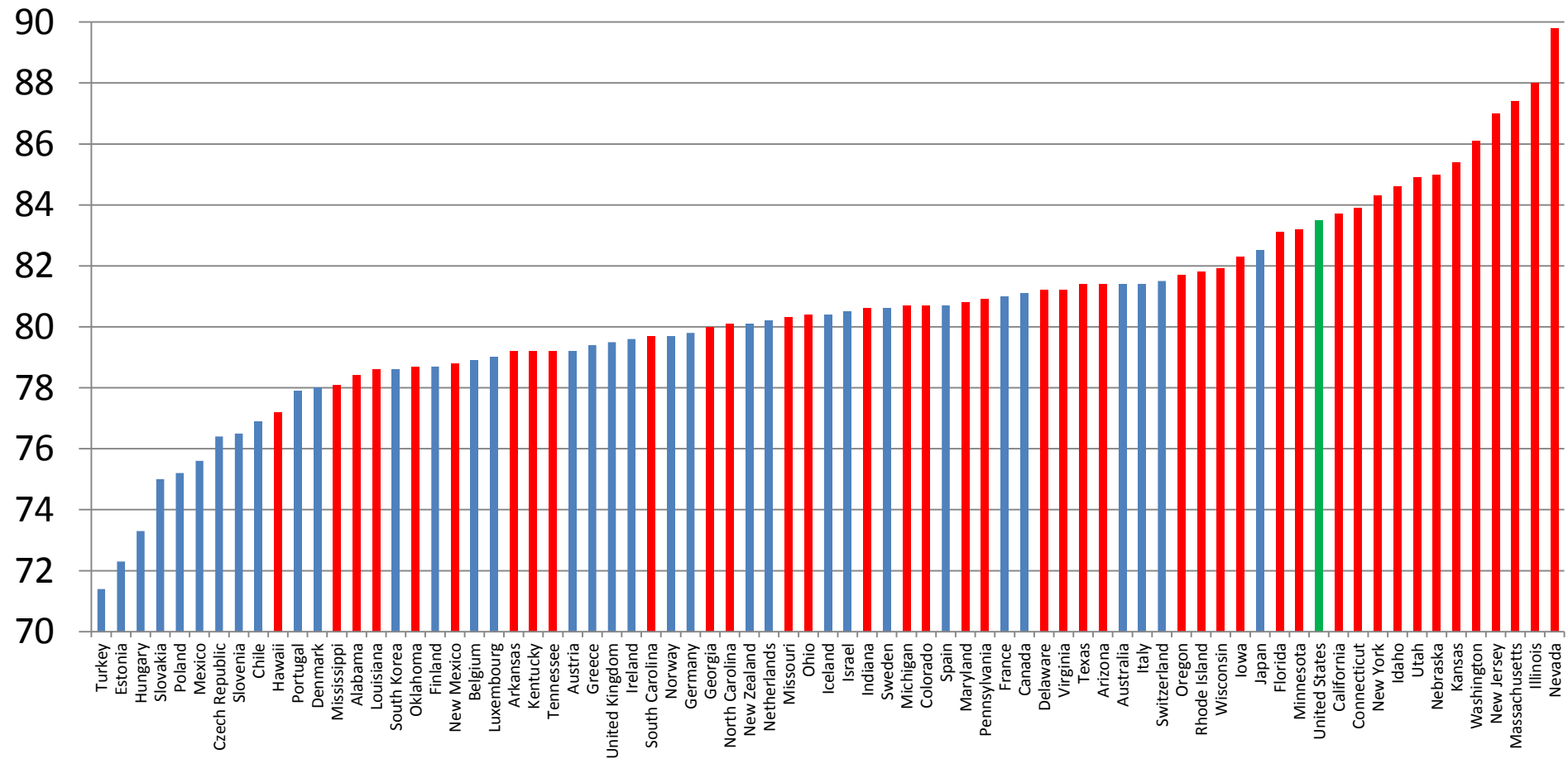
US Data: HD Index and Supplemental Indicators By State, 2010-11 Dataset, Measure of America, Social Science Research Council,

<http://measureofamerica.org/maps/?area=States&race=All&sex=All&year=Year2010&index=Life%20Expectancy%20at%20Birth%20%28years%29>

(Accessed: Jan. 9, 2013)

Figure 11

Life Expectancy at Birth, 2007 in Years: OECD Nations vs. Hispanic Americans by State



Source: OECD Data: United States Census Bureau. International Programs. International Data Base. Mortality Indicators by Sex.

<http://www.census.gov/population/international/data/idb/informationGateway.php> (Accessed: November 17, 2013)

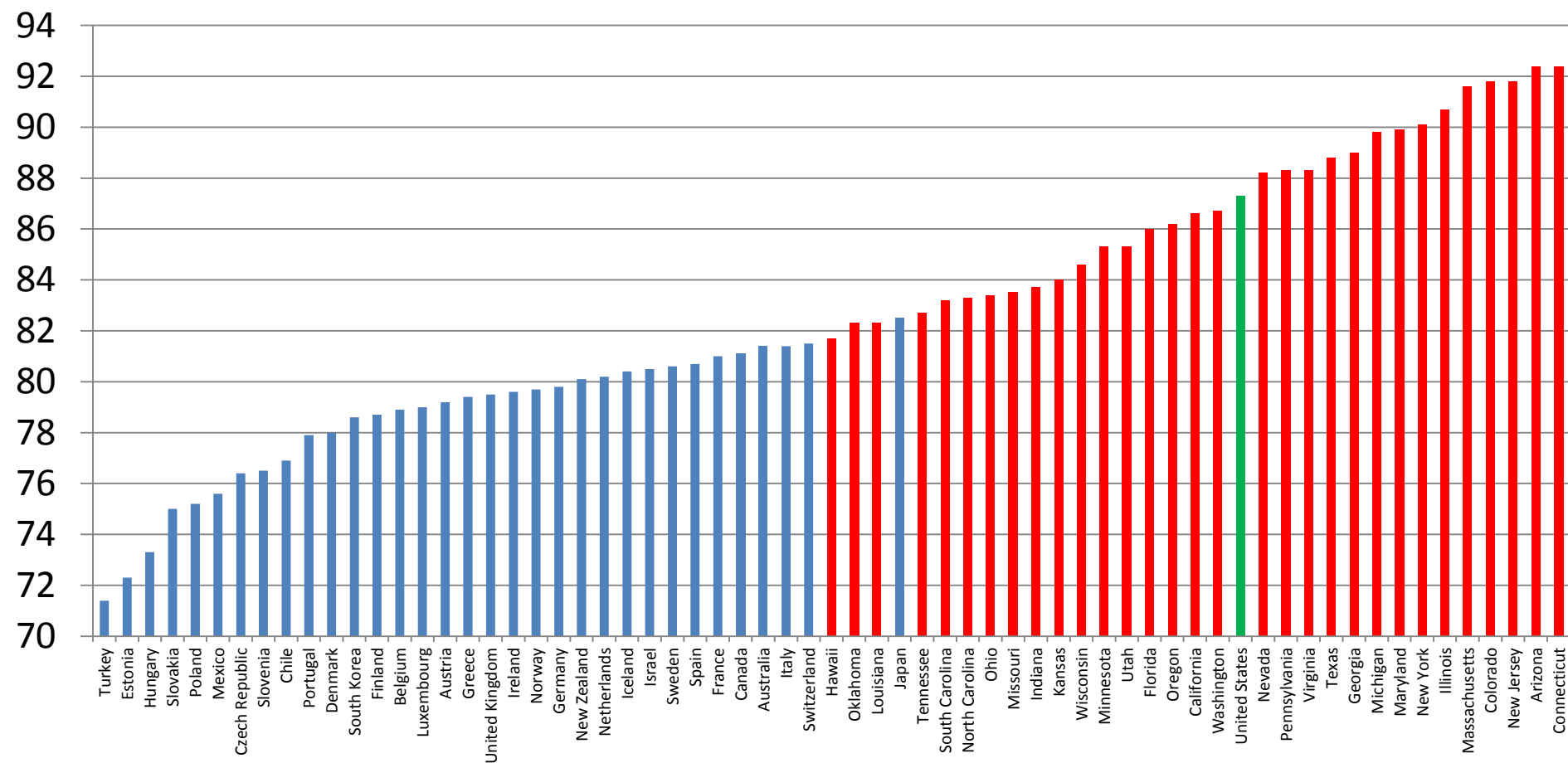
US Data: HD Index and Supplemental Indicators By State, 2010-11 Dataset, Measure of America, Social Science Research Council,

<http://measureofamerica.org/maps/?area=States&race=All&sex=All&year=Year2010&index=Life%20Expectancy%20at%20Birth%20%28years%29>

(Accessed: Jan. 9, 2013)

Figure 12

Life Expectancy at Birth, 2007 in Years: OECD Nations vs. Asian Americans by State



Source: OECD Data: United States Census Bureau. International Programs. International Data Base. Mortality Indicators by Sex.

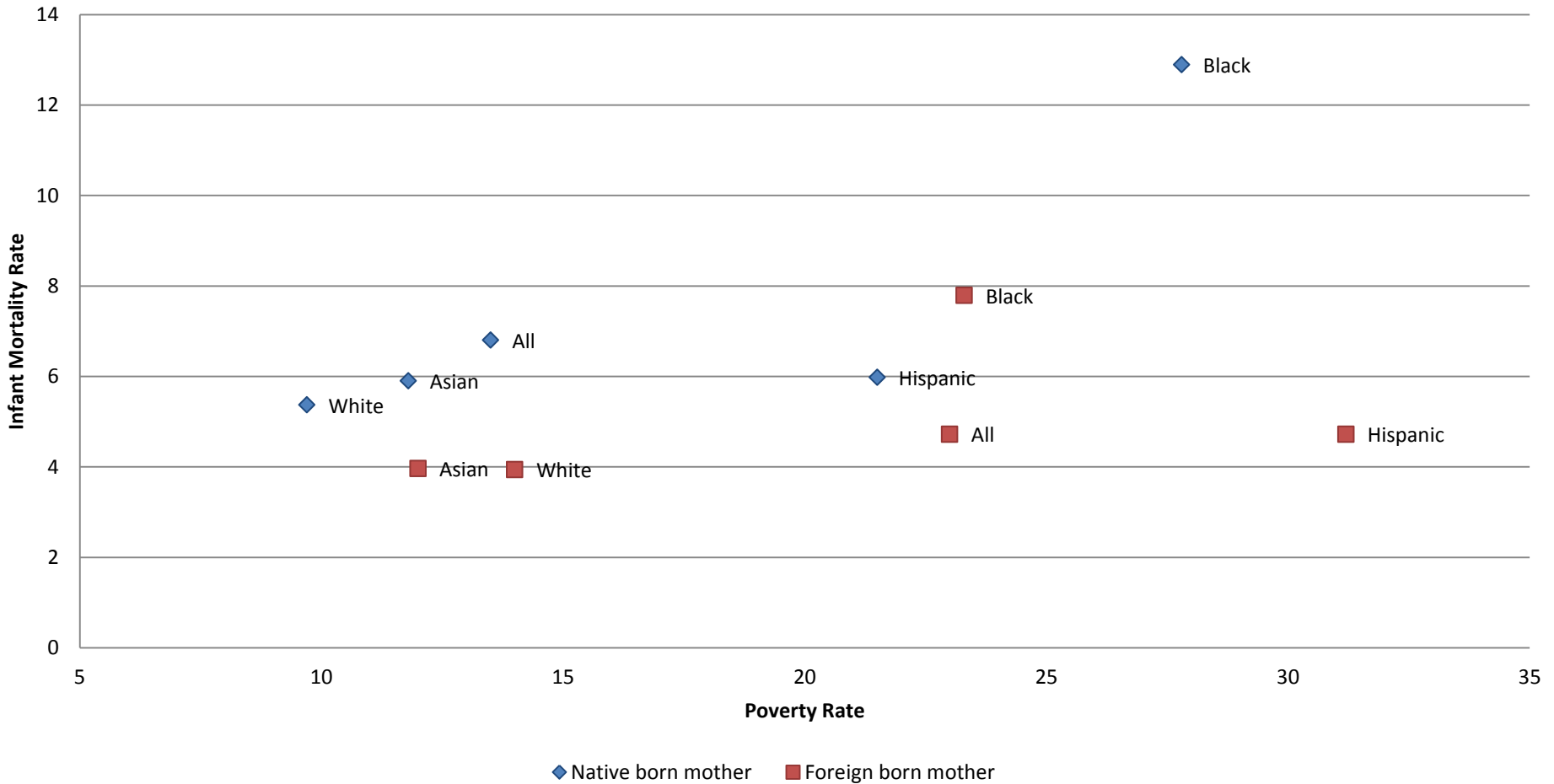
<http://www.census.gov/population/international/data/idb/informationGateway.php> (Accessed: November 17, 2013)

US Data: HD Index and Supplemental Indicators By State, 2010-11 Dataset, Measure of America, Social Science Research Council,

<http://measureofamerica.org/maps/?area=States&race=All&sex=All&year=Year2010&index=Life%20Expectancy%20at%20Birth%20%28years%29>

(Accessed: Jan. 9, 2013)

Figure 13
Infant Mortality Rate (2009) vs. Poverty Rate (2010):
US Native born vs. Foreign born mothers by ethnicity



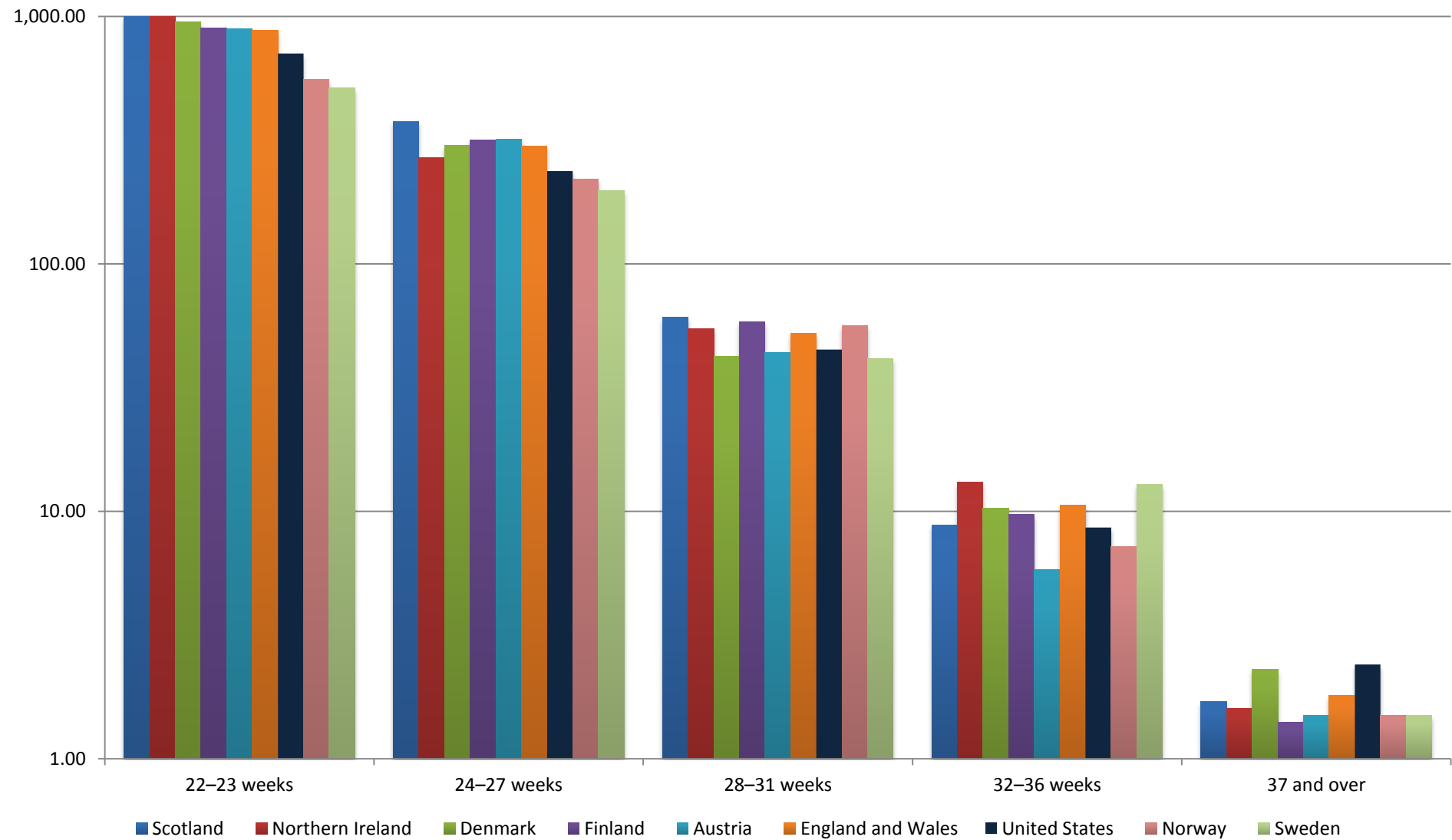
Source: Infant mortality rate: T.J. Mathews and Marian MacDorman, *Infant Mortality Statistics From the 2009 Period Linked Birth/Infant Death Data Set*, National Vital Statistics Reports, Vol 61, No. 8, January 24, 2013, http://www.cdc.gov/nchs/data/nvsr/nvsr61/nvsr61_08.pdf.
 Poverty Rate data: Center for Immigration Studies, "Poverty, Welfare, and the Uninsured," *Immigrants in the United States: A profile of America's Foreign born Population*, Table 10, <http://cis.org/node/3876#poverty>, Accessed November 15, 2013.

Table 2
Infant Mortality Rate by Ethnicity, marital status, and education level,
2007-2009

	8th grade or less	9th-12th grade, no diploma	High school graduate or GED completes	Some college, no degree	Bachelor's degree	Master's degree	Doctorate or Professional degree	Total
Married Non-Hispanic Black		10.25	10.77	10.48	8.5	5.56		9.44
Unmarried Non-Hispanic Black	12.55	14.84	13.06	11.74	10.21	12.86		12.81
Married Non-Hispanic White	6.42	8.37	5.6	4.58	3.28	2.97	3.58	4.24
Unmarried Non-Hispanic White	8.43	10.03	7.53	5.66	5.66			7.13

Source: United States Department of Health and Human Services (US DHHS), Centers of Disease Control and Prevention (CDC), National Center for Health Statistics (NCHS), Division of Vital Statistics (DVS), Linked Birth / Infant Death Records 2007-2009 on CDC WONDER On-line Database. Accessed at <http://wonder.cdc.gov/lbd-current.html> on Nov 17, 2013

Figure 14
Gestational age-specific infant mortality rates,
United States vs. selected European countries, 2004



Source: Marian MacDorman and T.J. Mathews, *Behind international rankings of infant mortality: How the United States compares with Europe*, Table 2, *International Journal of Health Services*, Volume 40, Number 4, Pages 577-588, 2010.